

# Dom 11A

Łączna powierzchnia: 110,07 m<sup>2</sup>



## POZIOM 0

- |                     |                      |
|---------------------|----------------------|
| 1. Hol              | 4.89 m <sup>2</sup>  |
| 2. Łazienka         | 3.35 m <sup>2</sup>  |
| 3. Salon z aneksem  | 38.30 m <sup>2</sup> |
| 4. Pom. techn-gosp. | 6.83 m <sup>2</sup>  |

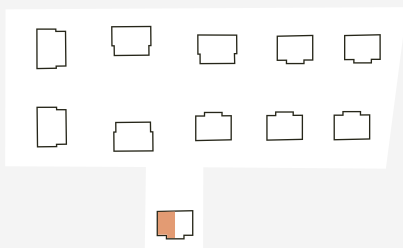
SUMA **53.37 m<sup>2</sup>**

## POZIOM 1

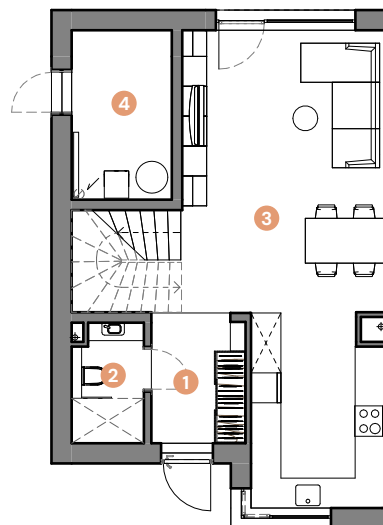
- |              |                      |
|--------------|----------------------|
| 5. Hol       | 5.23 m <sup>2</sup>  |
| 6. Schody    | 4.04 m <sup>2</sup>  |
| 7. Pokój 1   | 10.73 m <sup>2</sup> |
| 8. Pokój 2   | 10.15 m <sup>2</sup> |
| 9. Pokój 3   | 11.53 m <sup>2</sup> |
| 10. Pokój 4  | 10.09 m <sup>2</sup> |
| 11. Łazienka | 4.93 m <sup>2</sup>  |

SUMA **56,70 m<sup>2</sup>**

Ogród: 244 m<sup>2</sup>



## POZIOM 0



## POZIOM 1

